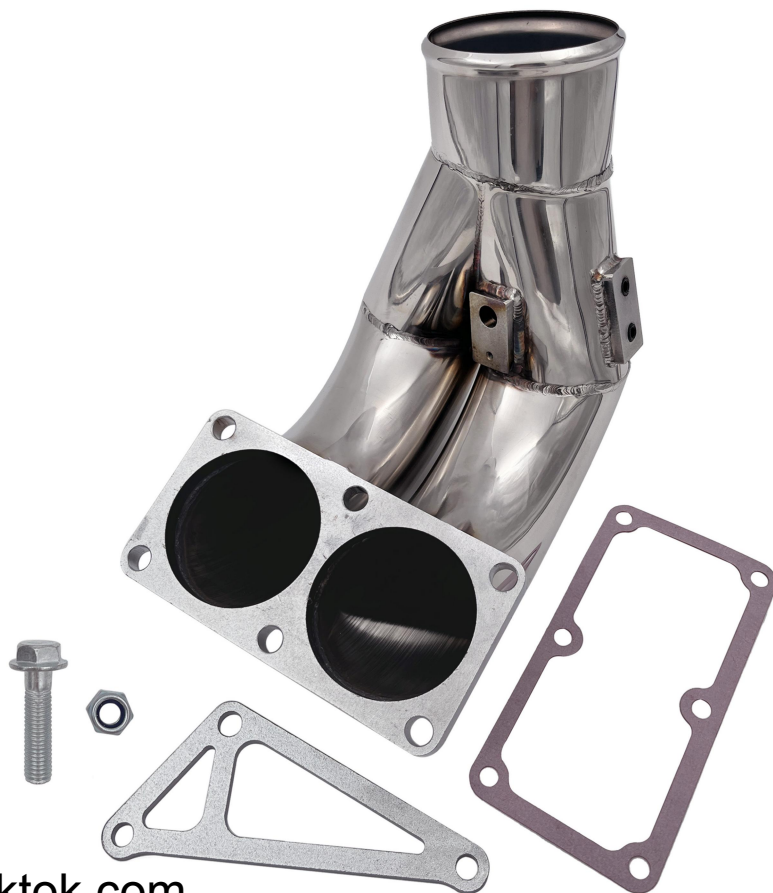




## 3.5inch Intake Manifold Elbow Tube

**2007-2018 6.7L Dodge Ram Cummins**



 [www.trucktok.com](http://www.trucktok.com)

 Facebook: Trucktok

 Email: [service@trucktok.com](mailto:service@trucktok.com)

**-Package Includes:**

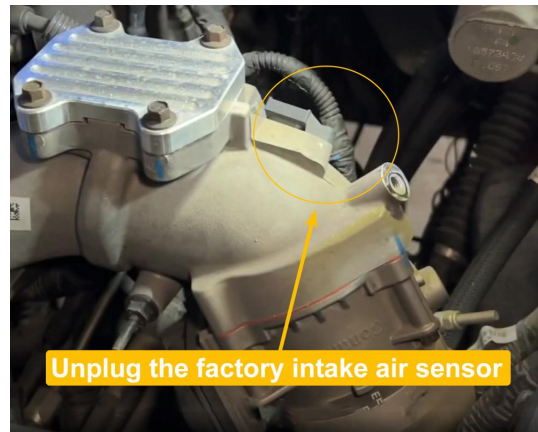
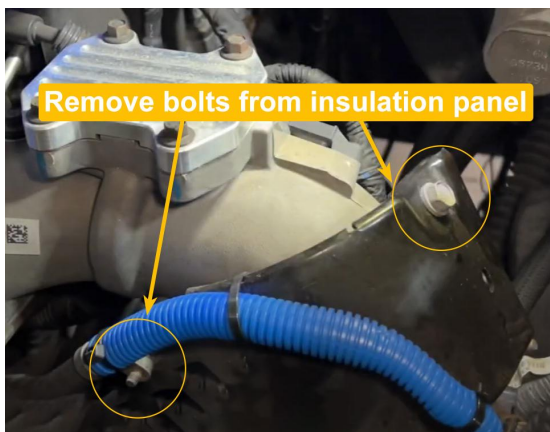
- 1 x Intake Manifold
- 1 x bracket
- 1 x grommet
- 1 x bolt
- 1 x nut

**! Before installation, confirm that:**

This high-performance component does not comply with the laws and regulations for highway driving and cannot be used on any vehicle that has been registered or certified for use on highways. This means that the component may only be suitable for racing cars or other off-road vehicles. If it is installed on vehicles driving on the highway, legal issues will be borne by oneself

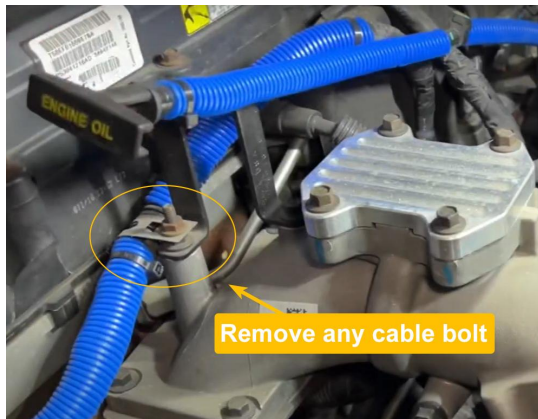
**Installation instructions steps:****Step 1:**

1. Remove the heat shield if you have one.
2. Unplug the factory intake air sensor.

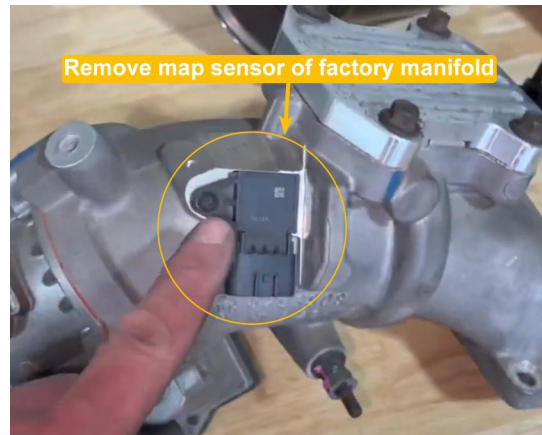


**Step 2:**

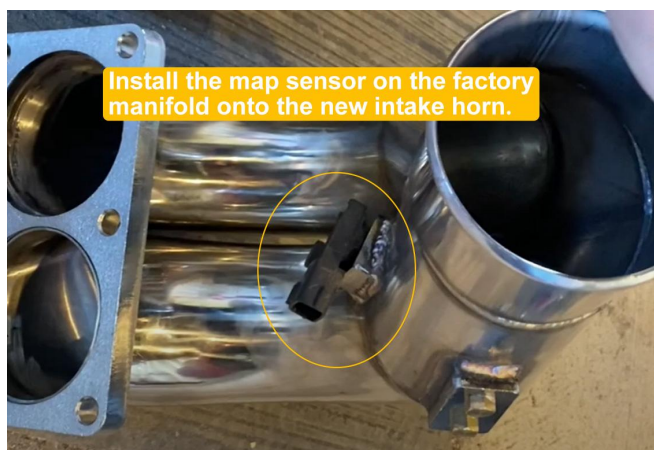
1. Remove any cable bolt to gain more access.
2. Use a wrench to loosen the bolts on the dust cover bracket. If the dust cover gets stuck, use a screwdriver if necessary to loosen the dust cover.

**Step 3:**

Use a wrench to unscrew the screws of the map sensor on the factory manifold.

**Step 4:**

Install the map sensor on the Factory manifold onto the new intake horn.





**Step 5:**

1. Be careful to clean the dirt on the gasket surface near the engine to prevent it from entering the engine.
2. Install the new gasket in the kit.

**Step 6:**

1. Install the intake horn, insert one end of the horn into the rubber boot, and secure it with a clamp.
2. Install the intake pipe horn using the original 6 bolts from the factory.

**Step 7:**

Remove the three screws fixed here, install the dipstick bracket in the kit, and secure it with factory screws.

